

PITSCO

METAL TOOL BOX KIT

BEFORE YOU BEGIN

1. Read through the instructions and take a close look at the drawings. Get a good idea of the materials and processes required before you begin.

BOTTOM & SIDES

2. Lay out, cut & notch, as indicated on the plan. It is most important that the bending is done in the sequence indicated.
3. Hem line 1 by folding it back on itself (see detail A).
4. Bend lines 3 & 4 up 90°.
5. With a hand bender, bend lines 2 up 90°.
6. File all sharp edges.

ENDS

7. Lay out and cut the ends. If possible, shear the corners off with a Squaring Shear.
8. File all corners round.

COVER

9. Lay out, notch, and drill the cover as shown.
10. Bend lines 6 up 40°.
11. Bend line 7 up 50°.
12. With a hand bender, bend lines 5 up 90°.
13. File all sharp edges.

ASSEMBLY

14. Holding the ends firmly, spot weld or rivet them to the sides.
15. Spot weld or rivet the hinge to the back of the body. NOTE: the hinge should go to the inside of the body.
16. Spot weld or rivet the cover to the hinge.
17. Attach the handles with pop rivets.
18. Attach the top part of the front latch with pop rivets. Hold the cover in a tightly closed position and locate the holes for the bottom part of the latch. When you drill the holes for this piece, drill about 1/16" closer to the bottom of the box than it looks like you need. This will put tension on the latch and make it operate more firmly.
19. Hold the bottom corners in place, drill, and attach with pop rivets.
20. You have now completed your box. As the material is galvanized iron, it will not be inclined to rust. If you wish to paint it, first etch the toolbox by wiping vinegar on it. This allows it to hold the paint better. Enamel paint works best.

BILL OF MATERIALS

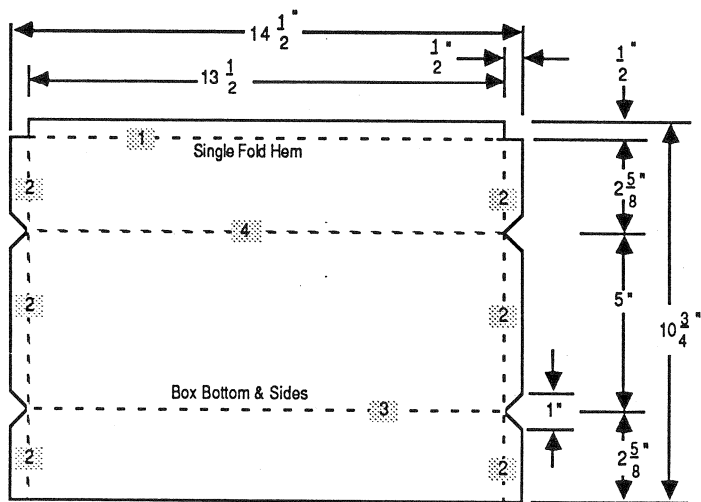
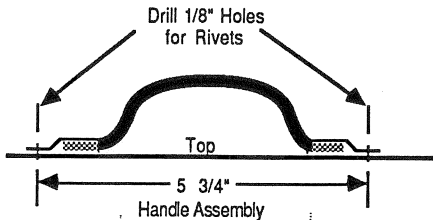
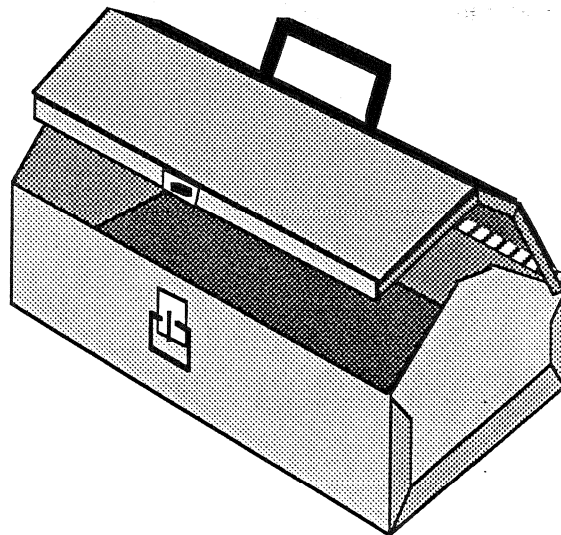
Part Name	No. Req.	Size	Material
Top	1	14-1/2" x 16-3/8"	24 Gauge C.R.
Bottom & Sides	1	14-1/2" x 10-3/4"	24 Gauge C.R.
Ends	2	4" x 5"	24 Gauge C.R.
Continuous Hinge	1		
Handle	1		
Hasp	1		
Corners	4		

PITSCO

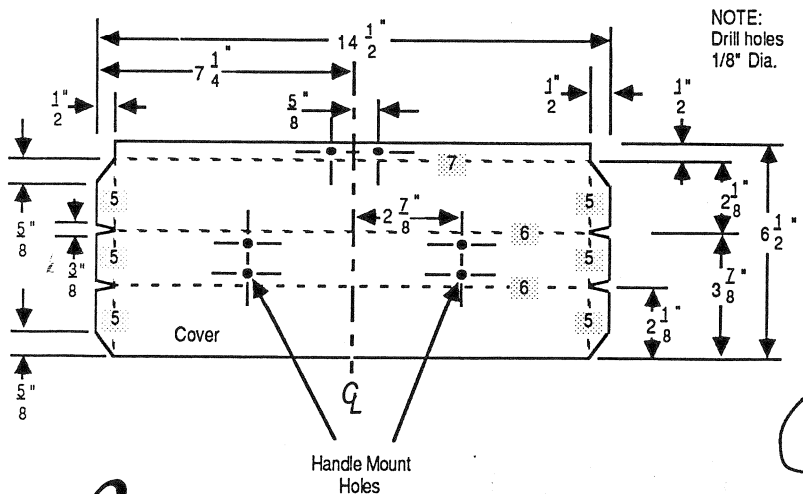
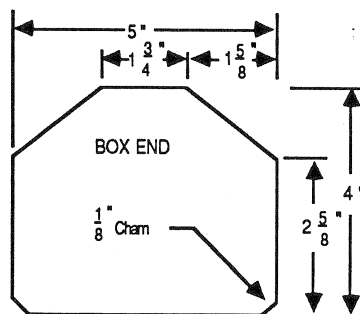
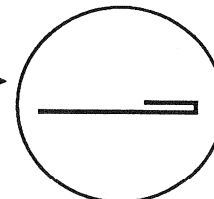
METAL TOOL BOX KIT

(With Metal)

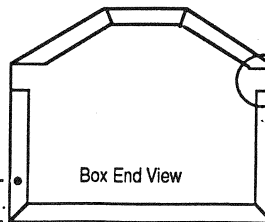
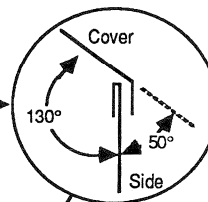
13426



DETAIL A
(hem)



DETAIL B



NOTE: when riveting the box end to the sides, the rivets must be at least 1" from the bottom to allow for the corners.

Pitco

PO Box 1328

Pittsburg, KS 66762

TOLL FREE 1-800-835-0686

v.9.27.94

FREEFAX 1-800-533-8104